

# WELCOME TO THE STRIP 1 TYSONS PROJECT COMMUNITY OPEN HOUSE



**7:00 - 7:30PM OPEN HOUSE**

**7:30 - 8:00PM PRESENTATION + Q&A**

**8:00 - 8:30PM OPEN HOUSE**

# PRESENTATION AGENDA

Project Overview

Phase 3 — Active Construction

Phase 6 — Potential Routes

FAQs

Safety / Damage Prevention

Community Outreach

Q&A



# PROJECT OVERVIEW

## STRIP 1 TYSONS

Washington Gas, a WGL company, has provided energy solutions to the national capital region since 1848. Today, clean-burning natural gas is the fuel of choice for more than nine out of 10 new homebuyers in the Washington, D.C. metropolitan area, and Washington Gas serves more than 1.1 million customers throughout the region. As the region continues to grow, additional natural gas capacity is needed to improve reliability and reinforce the system with alternative sources during maintenance activities and periods of high-volume usage.

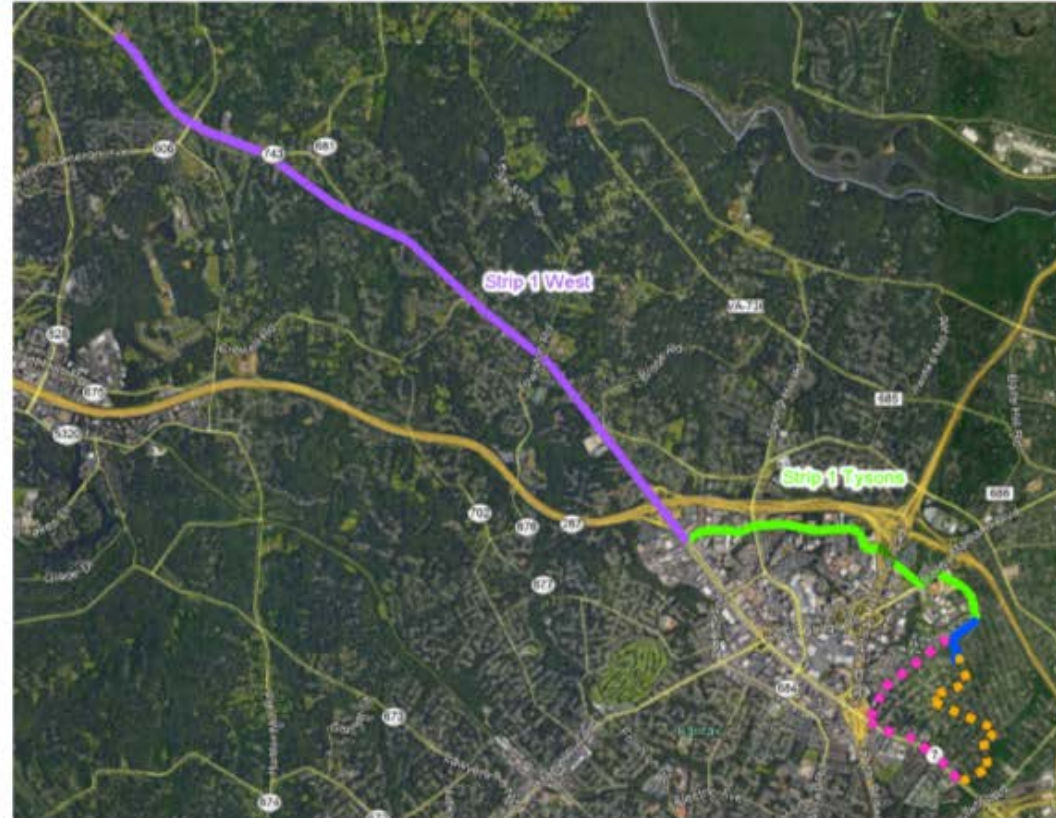
To address these needs, Washington Gas is constructing new infrastructure in your area to improve the delivery, safety and reliability of natural gas service for Fairfax County and the entire District of Columbia metropolitan region. This Project is just one of many infrastructure improvements being made across the region.

In 2012, we began working to upgrade the infrastructure in the Tysons area. We started at Tyco Road, crossed the Capital Beltway and will connect to the existing Regulator Station located at the intersection of Pimmit Drive and Route 7 in Falls Church. The entire project spans approximately five miles in length, mostly within public right-of-ways.



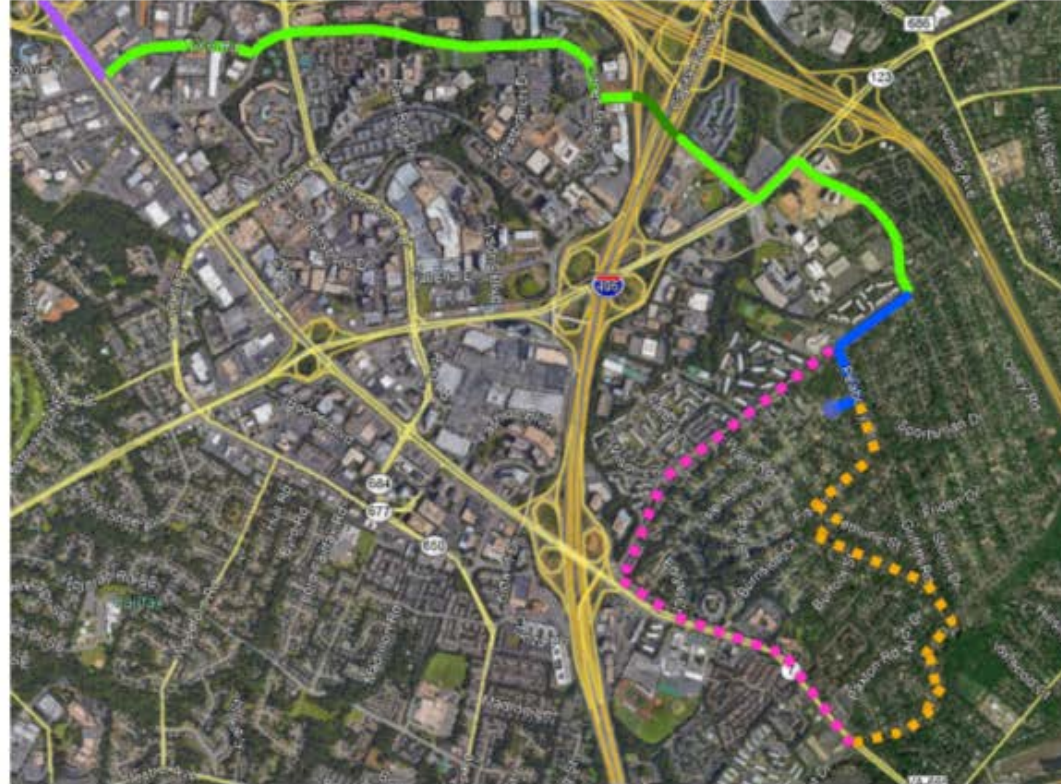
# RELATED PROJECTS

## STRIP 1 INFRASTRUCTURE IMPROVEMENTS



# STRIP 1 TYSONS

ALL PHASES



Know what's below.  
Call before you dig.

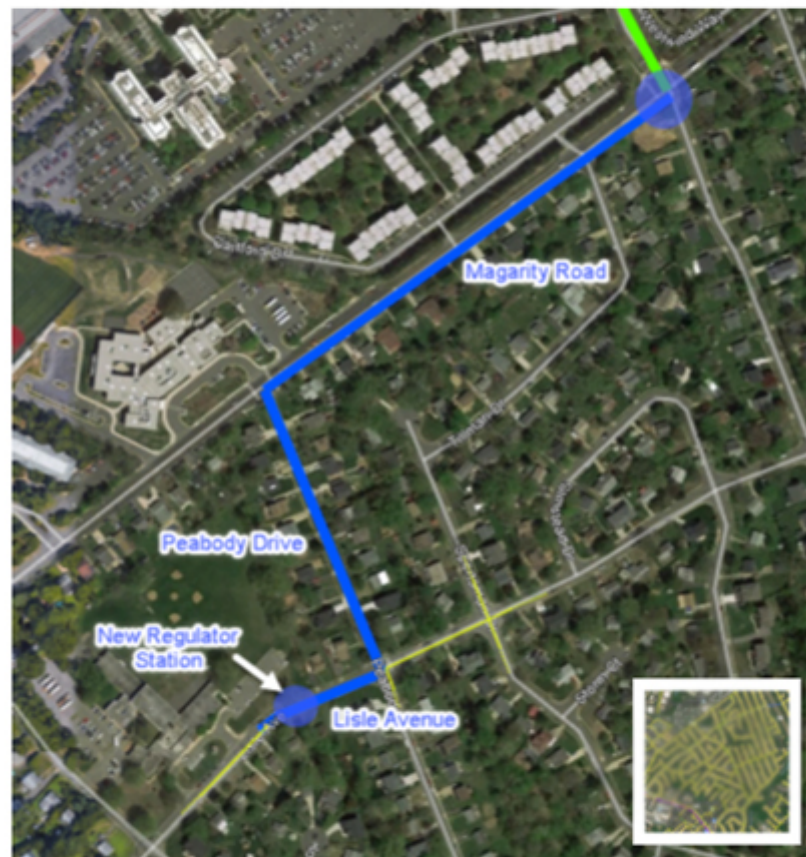


Washington  
Gas

A WGL Company

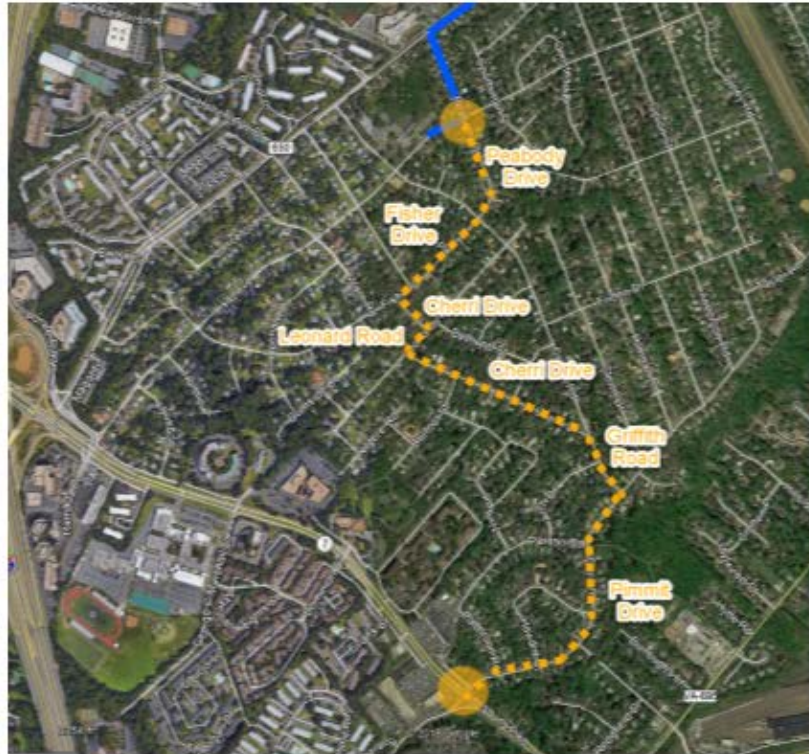
# PHASE 3

ACTIVE CONSTRUCTION



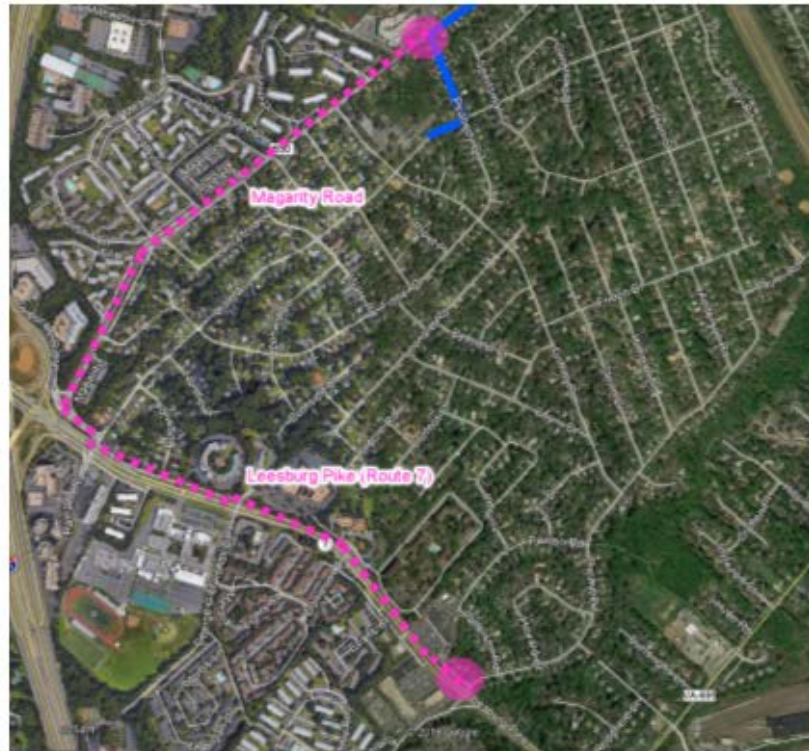
# PHASE 6

POTENTIAL ROUTE - FISHER / CHERRI



# PHASE 6

POTENTIAL ROUTE - MAGARITY / RT 7





# WHAT YOU CAN EXPECT

## PHASE 6



	<b>Route</b> “Fisher / Cherri”	<b>Route</b> “Magarity / Rt 7”
<b>Anticipated Duration</b>	<b>3 Years</b> 2019 – 2021	<b>6 Years</b> 2019 – 2025
<b>Length [feet]</b>	<b>8,000</b>	<b>9,300</b>
<b>Residences &amp; businesses on route</b>	<b>~150</b>	<b>5,000+</b>
<b>Max daily traffic disruption</b>	<b>7,000</b>	<b>41,000</b>
<b>Other comparisons</b>	<b>Block-by-block construction</b> Blocks closed to through traffic	<b>Likely closures of major thoroughfares</b> Increased neighborhood cut-throughs
<b>Most significant disruption</b>	<b>Residents on route</b>	<b>Travelling public</b> + residents on route + residents on cut-throughs



Know what's below.  
Call before you dig.

# FAQS

## WHAT ARE THE WORK HOURS?

Work will typically be performed between 9 a.m. and 3:30 p.m. Monday through Friday.

You can expect to see workers 8:00 a.m. to 5:00 p.m. Monday through Friday.

Work hours are subject to change. We notify nearby residents of work hours.

## WHAT IS THE PROJECT SCHEDULE?

Phase 3 is scheduled to be completed by April 2019.

Once the permit is issued, Phase 6 will take three to six years to complete *(depending on the route)*.

Construction schedules may be affected by circumstances such as weather.



# FAQS

## WHAT IS THE TYPICAL SEQUENCE OF CONSTRUCTION?

1. Written notification given to community.
2. Community block meeting is held followed by ongoing communications throughout construction.
3. Miss Utility (811 Call Before You Dig) locates and marks utilities.
4. Crews start spotting the utilities, marking boundaries, setting up traffic control, and staging materials and equipment.
5. Crews mobilize and begin cutting the road (if necessary) and excavating.
6. Crews stabilize the excavation site and perform the construction work.
7. At the end of every work day, the crews secure the construction sites and remove traffic controls (if they are temporary).
8. When construction activity is complete, crews demobilize and permanent restorations are completed typically within 45 days (weather permitting).

# FAQS

## IF I LIVE ALONG THE CONSTRUCTION ROUTE, WHAT CAN I EXPECT?

Roads may be closed to through traffic during construction.

Parking may be restricted on the roads under active construction.

You will always be provided access in and out of your home or we will provide you with advance notification and coordinate with you.

We will host block meetings with the residents on the block where work will be proceeding. You will be notified in advance of the meetings.

**WE ARE COMMITTED TO FREQUENT ENGAGEMENT  
WITH THE COMMUNITY THROUGHOUT THIS PROJECT.**



# FAQS

## IF I LIVE IN THE NEARBY COMMUNITY, WHAT CAN I EXPECT?

Roads may be closed to through traffic during construction

Please follow traffic control signs for detour information. We will work to minimize other traffic disruptions as much as possible, but there will be periodic lane closures and other traffic control strategies.

We are committed to frequent engagement with the community during these final two phases of the project and will provide you with updated information and ways to provide input to our team. We are working diligently with the area schools to minimize the impact of construction during the school year.

**THANK YOU FOR YOUR PATIENCE AS OUR  
CONSTRUCTION CREWS PERFORM THIS IMPORTANT  
WORK IN YOUR COMMUNITY.**



# DEDICATED TO SAFE CONSTRUCTION & OPERATION

## DESIGN

Pipe strength designed to exceed requirements

---

Pressure reducing stations to control pressure on pipe at operating requirements

---

Epoxy-coated pipe to prevent corrosion

---

Cathodic protection to prevent corrosion

---

Designed to allow internal integrity testing



# DEDICATED TO SAFE CONSTRUCTION & OPERATION

## CONSTRUCTION

X-ray and coating of all welds

---

Coating inspection of entire pipe before covering with backfill

---

Non-metallic slings to handle pipe to prevent damage to coating

---

Hydrostatic test of pipe at higher pressure than operating pressure



# DEDICATED TO SAFE CONSTRUCTION & OPERATION

## OPERATIONS

Pipeline pressure monitored by Washington Gas Control 24 hours per day, 7 days per week

---

Inspection during operation to identify any dents, gouges, or variations in pipe thickness

---

Continuous patrols and inspections of our system

---

811 Call Before You Dig [www.missutility.net](http://www.missutility.net) (DC and MD) [www.missutilityofvirginia.com](http://www.missutilityofvirginia.com) (VA)

---

Washington Gas Damage Prevention Hotline 800-428-5364

---

Pipeline Markers





# COMMUNITY OUTREACH

[OUTREACHTEAM@WGSTRIP1TYSONS.COM](mailto:OUTREACHTEAM@WGSTRIP1TYSONS.COM)

[WWW.WGSTRIP1TYSONS.COM](http://WWW.WGSTRIP1TYSONS.COM)



Know what's below.  
Call before you dig.



Washington  
Gas

A WGL Company